



MACHINE LAYOUT:

- Machine bed
- Table with horizontal axis
- Clamp-holder jaws
- Nr. 12 machining units
- Electrical cabinet

Machine bed:

The machine bed is made of welded and normalized steel. It is equipped with a slide for conveying the chips.

The machine is also equipped with tool cooling unit and automatic chip conveyor.



Table:

Table with horizontal axis with HIRT crown gear blocking system with 8 stations. The diameter measured from the centre of the jaw to the centre of the table is 950 mm.

The rotation cycle is the following:

- Table release
- HIRT crown gear release
- CNC controlled rotation with brushless motor and speed reducer
- Table locking on HIRT crown gear



Clamp-holder jaws:

The table is equipped with self-centring jaws with a number of clamps that are easily interchangeable.

The dimension of the centre of the clamp-holder spin is 100 mm.

The clamping of the piece is carried out by means of an oleo dynamic cylinder, that operates two levers located in the clamp-holder slide.

An oleo dynamic distributor on the axis of the table sees to the feeding of the single pistons.

On the loading-unloading station such distributor allows the automatic clamping and release of the jaw.



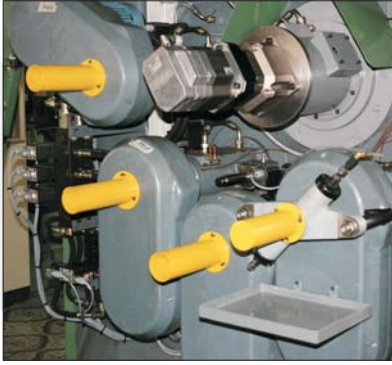
The working stations are protected by a safety device that does not allow the jaws to open in case of pressure drop.

The machining units have the following layout:

- No. 4 units on the right side
- No. 4 units on the left side
- No. 4 radial units



UNIT DESCRIPTION



DRILLING UNIT:

Technical characteristics:

- Max. spindle stroke: 95 mm
- ISO 30 spindle/nose coupling
- 40 bar axial thrust: 750kg
- Working feed speed with adjustable continuous variation (0-60mt/mn)
- Motor motion transmission by means of toothed belt
- Speed variation with 3-step pulley
- Motor capacity: M0100 2/4 poles 1400/2800 revs. Hp4



TAPPING UNIT:

Technical characteristics:

- Max. spindle stroke: 95 mm
- ISO 30 spindle/nose coupling
- Split nuts and nut screws easily replaceable to allow different threads
- Release of split nuts in case of overload
- Motor motion transmission by means of toothed belt
- Speed variation by means of Siemens inverter
- Motor capacity: M0132 S 4 poles 4Hp 1400revs.



General characteristics:

Net weight: approx. 9.5 tons
Dimensions: 4600x3300x3500

Machine Quotation:

Price for the afore machine made up as follows:

- No.1 Machine base for 12 units
- No. 12 Machining units
- Table with HIRT locking system
- Electrical installation (voltage to be assessed) with Siemens programmable PLC and panel for managing controls and fault locator. Siemens digital control for the rotation of the table
- No.1 Hydraulic tank for machine and units running with ATOS material
- Centralized lubrication system with DROPSA pump
- Main push-button panel for the general control of the machine plus two additional push-button panels (one on each side) to control the back units of the table.
- Standard accessories
- Instruction handbook complete with electrical and hydraulic diagrams
- The machine is built in compliance with EC directives.

Price ex our warehouse in Cazzago San Martino (packaging not included): € 260.000,00

